



TJERNLUND PRODUCTS, INC.

1601 Ninth Street • White Bear Lake, MN 55110-6794
PHONE (800) 255-4208 • (651) 426-2993 • FAX (651) 426-9547
Visit our web site • www.tjernlund.com

MODEL SS2 REPLACEMENT VENTER HOUSING INSTRUCTIONS

▲ WARNING

Disconnect power supply before making wiring connections to prevent electrical shock and equipment damage.

1. Disconnect and label all supply and control voltage electrical connections to SS2 electrical box.
2. Remove vent pipe and SS2 inlet pipe by twisting counter clockwise, (See Diagram A).
3. Remove (9) screws from rear and bottom of vent cabinet, (See Diagram B).
4. Slide venter assembly out of SS2 cabinet and set assembly on its side on a flat working surface, (See Diagram B).
5. Remove (8) nuts from inlet assembly. Remove the flexible tubing from fan proving switch and carefully pull inlet assembly from venter housing, (See Diagram C).
6. Loosen impeller set screw by using 1/8" Allen Wrench. If impeller is hard to remove or stuck in place use penetrating oil. **NOTE: DO NOT PULL ON IMPELLER BLADES. THIS COULD CAUSE DAMAGE. PULL ONLY FROM THE IMPELLER HUB.**
7. Cut and remove the retaining clip from the pivot pin using caution not to damage pivot pin, (See Diagram D). Push the pivot pin through the damper rod extension and unscrew the damper rod extension from the damper rod, (See Diagram E). A new clip has been provided for reassembly.
8. Remove (2) nuts for limit and motor wire routing clips. Remove (6) nuts that hold housing to the heat shield. **NOTE: Save nuts, spacers, and wire routing clips for reassembly.** Carefully remove venter housing from heat shield, (See Diagram G).
9. Place spacers on new venter housing. Insert damper rod through heat shield and attach venter housing to heat shield by hand tightening (6) nuts. Insert alignment tool over the motor shaft through venter housing and heat shield, (See Diagram F). Firmly tighten (6) nuts which hold venter housing to heat shield and remove alignment tool. Replace (2) nuts which hold wire routing clips for limit and motor leads.
10. Screw damper rod extension onto damper rod. **NOTE: Do not overtighten, (See Diagram E).** Insert pivot pin through pivot pin hole. Install provided retaining clip onto pivot pin using a small nut runner to push retaining clip on. **NOTE: The concave "bowl" side of the retaining clip must be facing damper rod extension, (See Diagram D).** Verify that damper adjustment knob rotates freely.
11. Reinstall impeller onto motor shaft to its original position and tighten set screw. Replace inlet assembly old gasket material with new gasket provided if old gasket material is brittle and doesn't provide a good seal. Insert inlet assembly onto venter housing and tighten (8) nuts. Hand rotate impeller to make sure it turns freely.
12. Reinstall fan prover flexible tubing on sensing tube and make sure no kinks are present.
13. Slide venter assembly into vent cabinet and reinstall (9) screws.
14. Reconnect supply and control voltage wires disconnected in step 1 and reestablish power.

▲ WARNING

Before proceeding, recheck over fire draft at operation steady state temperature. Adjust to a minimum of $-.02$ " W.C. Refer to SS2 Draft Adjustment Procedure in SS2 instruction manual for detailed information.

15. Run SS2 & appliance through a couple of heating cycles to verify proper operation.

DIAGRAM A

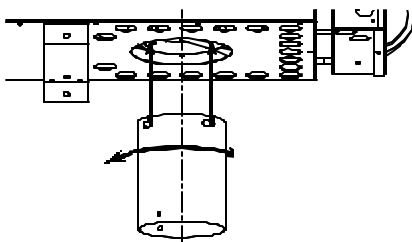


DIAGRAM B

